



# Quick Connector Plugs (DS)

Long plug with large flange. The length of the plug ensures tight internal closure, not only during transportation but during pressure tests, as well. The flange protects the external surface and makes the plug easy to remove. Available with a horizontal handle for added flexibility in packaging and ergonomics. Some plugs meet the requirements of SAE J2044 standard. Therefore, the dimensions given for the diameter are not that of the plug itself but of the nominal size of the pipe for which it is suitable

## Applications:

DS range is recommended for sealing the female part of a quick connector in fuel lines.

## Main features:



Ideal solution for quick connectors in fuel lines



Suitable for Automotive segment



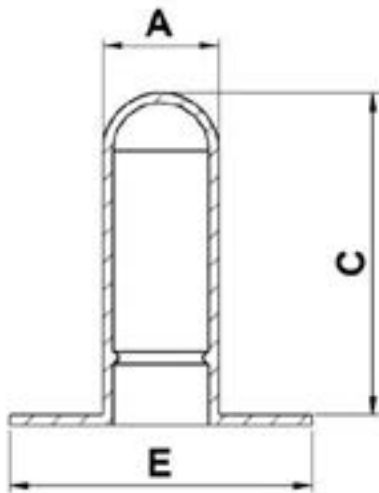
Excellent protection thanks to the external flange



Made of RECYCLE LDPE



Easy mounting & dismantling



## Properties

**Standard colour:** Natural- Other colors may be available upon request  
**Standard material:** RECYCLE LDPE

DBI Ref.	Suitable for standards	A mm	C mm	E mm	X mm	QTY Bag/Box
DS0064A -AA	SAE 1/4" (6.35 mm)	6,4	25,3	17,5	10,0	1000/10000
DS0078A -AA	SAE 5/16" (8 mm)	7,8	25,2	23,0	10,0	1000/8000
DS0080A -AA	SAE 8.0	8,0	25,3	23,0	10,0	500/8000
DS0095A -AA	SAE 3/8" (9.5 mm)	9,5	25,8	24,8	10,0	1000/7000
DS0100A -AA	SAE 10.0	10,0	27,0	24,8	10,0	1000/6000
DS0118A -AA	SAE 12.0	11,8	38,9	25,0	10,0	1000/5000
DS0126A -AA	SAE 1/2" (12.7 mm)	12,6	39,2	25,0	10,0	1000/5000
DS0150A -AV		15,0	34,1	34,0	10,0	1200/2400
DS0159A -AA	SAE 5/8" (16 mm)	15,6	34,1	33,8	10,0	1200/2400
DS0159A -AV	SAE 5/8" (16 mm)	15,6	34,1	33,8	10,0	1200/2400
DS0160A -AA	SAE 16.0	16,0	36,1	34,9	10,0	1200/2400
DS0180A -AA	SAE 18.0	17,9	34,0	-	10,0	250/2250